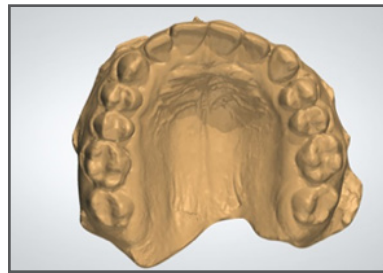


## HOW TO SCAN A BITE for EZ-Align® Cases

Your EZ-Align® cases rely on accurate scanning of the teeth, soft tissues and occlusal relationship in order to be digitized properly and replicated in the 3D Models. This will allow EZ-Align® to fabricate the clear aligners that will correct your patient's malocclusion.

1. Scan the upper and lower arches. Make sure all the teeth and soft tissues up to 10 mm above the gingival line is captured. If your case will need the EZ-X® Appliance, you need to capture the entire palate for the upper arch including the second molars (if erupted).



2. Request the patient to put the teeth at maximum intercuspation for a centric bite registration.



3. The result will be a fully scanned model with the correct bite registration with the patient at centric occlusion. Our technicians will always double-check the occlusion against the intra-oral photos you have provided.

4. The bite registration is stored digitally; it can be reproduced at any time with 100% accuracy.